

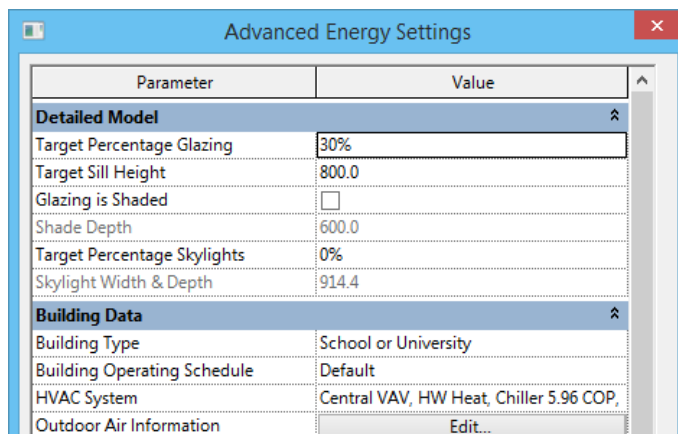
Alternatiivide võrdlus

Ülesande püstitus

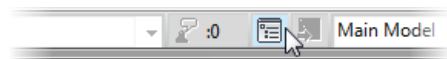
Selles näites redigeerid sa projekti alternatiivseid lahendusi ning lood massielemendil baseeruva energiasimulatsiooni. Seejärel võrdled erinevaid alternatiivseid lahendusi omavahel.

Disaini valikugruppide loomine

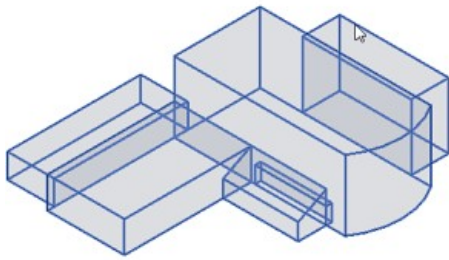
1. Autodesk Revit tarkvaras ava fail: *Design_Studies.rvt*.
2. Paanil *Analyze > Energy Optimization > Energy Settings*.
3. Dialoogis *Energy Settings*:
 - Veendu, et *Mode = Use Conceptual Masses*
 - Kliki nupul *Other Options > Edit*.
 - Veendu, et *Target Percentage Glazing = 30%*
 - Veendu, et *Target Sill Height = 800.0*
 - *HVAC System = Central VAV, HW Heat, Chiller 5.96...*
 - Kliki OK, et väljude mõlemast dialoogist.



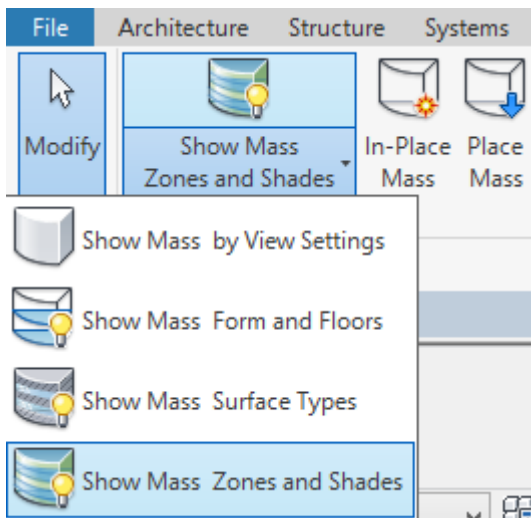
4. Ava ning paiguta kõrvuti järgmised kolm 3D vaadet:
 - Design Option 1
 - Design Option 2
 - Design Option 3
5. Status bar > Design Options.



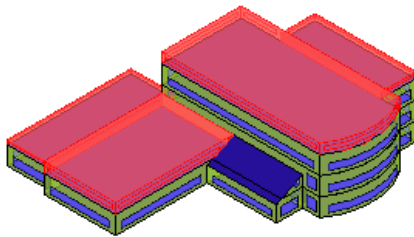
6. Dialoogis *Design Options*:
 - Vasakul paanil, vali *Option 2 (primary)*.
 - Sektsioonis *Edit > Edit Selected*.
 - Kliki *Close*.
7. Design Option 2 vaates vali massielementide grupp.




8. Paanil *Modify | Mass > Model > Mass Floors*.
9. Dialoogis *Mass Floors*, vali kõik neli tasapinda ning kliki OK.
10. Vajuta ESC klahvi, et tühistada valik.
11. Paanil *Massing & Site > Conceptual Mass > Show Mass Zones and Shades*.



12. *Design Option 2* vaates, vali neli katuse objekti (tsooni).



13. Paletil *Properties > Energy Analysis > Condition Type = Unconditioned*. Kliki *Apply*.

Mass Zone (4) ▼		Edit Type 
Mass: Type	ARCH_MASS_2	^
Mass: Family	ARCH_MASS_2	
Mass: Family and Type	ARCH_MASS_2: ARCH_M...	
Mass: Type Comments		
Mass: Comments		
Mass: Description		
Image		
Comments		
Mark		
Design Option	Option Set 1 : Option 2	
Energy Analysis		^
Space Type	<Building>	
Condition Type	Unconditioned ▼	
Properties help		<input type="button" value="Apply"/>

14. Kliqu mistahes joonise tühjas alas, et valik tühistada.
15. *Status bar > Design Options.*
16. *Design Options* dialoogis, kliqu *Finish Editing*. Kliqu *Close*.

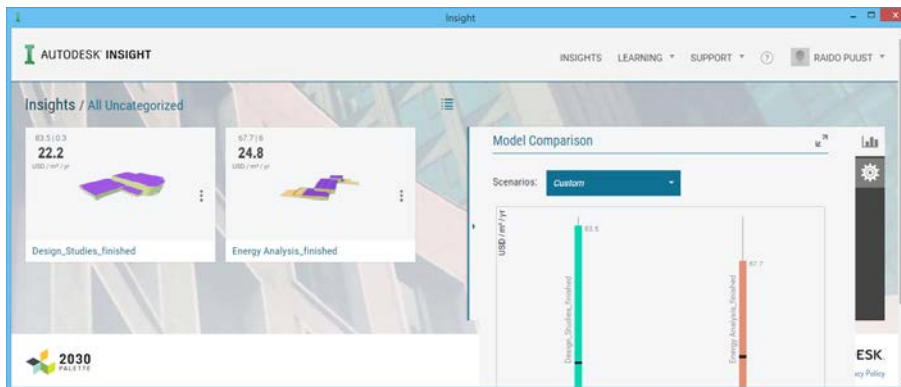
Massi elemendi analüüs

1. Veendu, et oleksid sisse loginud Autodesk teenustesse.

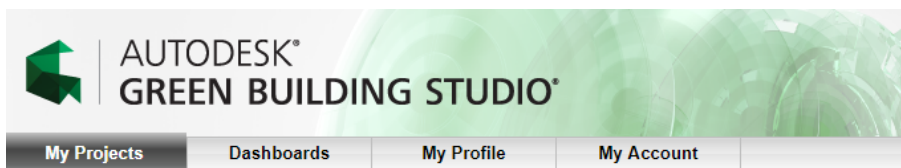


2. Vali *Design Option 1* vaade, et see aktiveerida.
3. Riba paanil *Analyze > Energy Optimization > Generate*.
4. Vali *Design Option 2* vaade, et see aktiveerida.
5. Riba paanil *Analyze > Energy Optimization > Generate*.
6. Vali *Design Option 3* vaade, et see aktiveerida.
7. Riba paanil *Analyze > Energy Optimization > Generate*.
8. Kliki riba paanil *Analyze > Energy Optimization > Optimize*.



Märkus: Pane tähele, et *Autodesk Insight* ei jäta alles arvutuste ajalugu, kuniks mudeli nimetust ei muudeta. Seega kui soovid, et eelnimetatud variandid oleksid eraldiseisvalt nähtavad/valitavad ka *Autodesk Insight* veebiteenuses, siis veendu, et enne uut arvutust nimetaksid oma *Revit* faili ümber.



Märkus: *Autodesk Green Building Studio* lingib automaatselt ennast *Autodesk Insight* keskkonnaga, ja jätab alles alati erinevad arvutused, mida saab seejärel omavahel võrrelda.



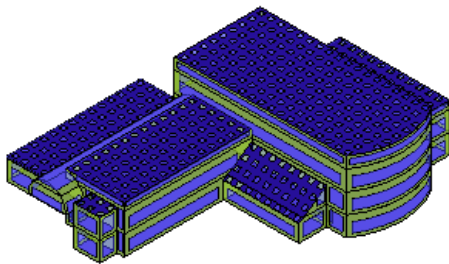
My Projects

Actions	
<input type="checkbox"/> Project Name	Dashboard ?
<input type="checkbox"/> Design_Studies_finished	
<input type="checkbox"/> Design_Studies_finished	
<input type="checkbox"/> Design_Studies_finished	

Massi elemendi analüüs

1. Veendu, et *Design Option 3* oleks aktiivne vaade.
2. Paanil *Analyze > Energy Optimization > Energy Settings*.
 - *Other Options > Edit*.
 - *Target Percentage Glazing = 45%*.
 - *Target Sill Height = 700*.
 - *Target Percentage Skylights = 20%*
 - Kliki OK mõlemas dialoogis.

Muudatused kajastuvad ka mudeli vaatel.



3. Vali *Analyze > Energy Optimization > Generate*.
4. Liigu Autodesk Green Building Studio veebiaadressile: <https://gbs.autodesk.com>
5. Juhul kui järgisid antud näidet, on kaks viimast arvutust (rida) teostatud mõlemad *Design Option 3* tähenduses. Seega vali need kaks rida ja kliki *Dashboard*.

Actions ▼	
<input type="checkbox"/>	Project Name
<input checked="" type="checkbox"/>	Design_Studies_finished
<input checked="" type="checkbox"/>	Design_Studies_finished
<input type="checkbox"/>	Design_Studies_finished
<input type="checkbox"/>	Design_Studies_finished

6. Vali *Actions > Add to Dashboard*.
7. Dialoogis *Add Projects to a Dashboard*:
 - *New Dashboard = Design Option 3*
 - Anna ka kirjeldus, et teaksid, mis on arvutuste põhierinevus.
 - Kliki *Continue*.

Add Projects to a Dashboard ✕

Add the projects to a:

New Dashboard

Design Option 3
enter dashboard name

Existing Dashboard

Add a description of this dashboard:

Glazing 30% vs 45%

982 characters remaining

Märkus: Seeläbi saad kahte arvutust omavahel võrrelda ja/või eksportida selle info näiteks MS Excelisse järelanalüüsiks.

Märkus: Lihtsa kokkuvõttena analüüsi, mis on üldine energiakulu erinevus?

Variant 1

Floor Area (m ²)	Energy Use Intensity (MJ/m ² /year) ?	Electric Cost (kWh)	Fuel Cost (/MJ)	Total Annual Cost ¹			Total Annual Energy ¹		
				Electric	Fuel	Energy	Electric (kWh)	Fuel (MJ)	Carbon Emissions (Mg)
--	--	\$0.14	\$0.01	--	--	--	--	--	--
4,813	765.4	\$0.14	\$0.01	\$62,229	\$23,304	\$85,533	433,048	2,124,959	--

Variant 2

Floor Area (m ²)	Energy Use Intensity (MJ/m ² /year) ?	Electric Cost (kWh)	Fuel Cost (/MJ)	Total Annual Cost ¹			Total Annual Energy ¹		
				Electric	Fuel	Energy	Electric (kWh)	Fuel (MJ)	Carbon Emissions (Mg)
--	--	\$0.14	\$0.01	--	--	--	--	--	--
4,813	940.5	\$0.14	\$0.01	\$70,859	\$30,173	\$101,032	493,106	2,751,317	--

See lõpetab käesoleva näite. Sulge failid.